

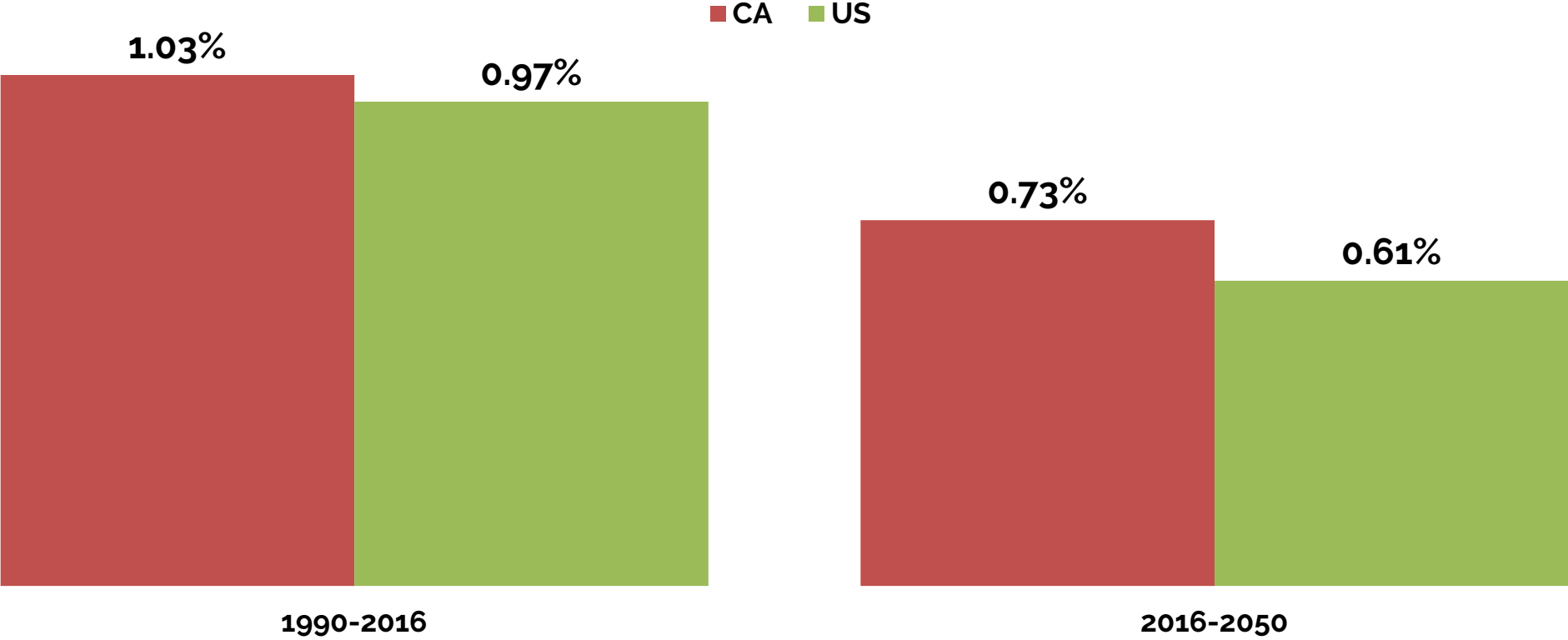
2020 Metropolitan Transportation Plan/Sustainable Communities Strategy (MTP/SCS)

Draft Regional Growth Projections

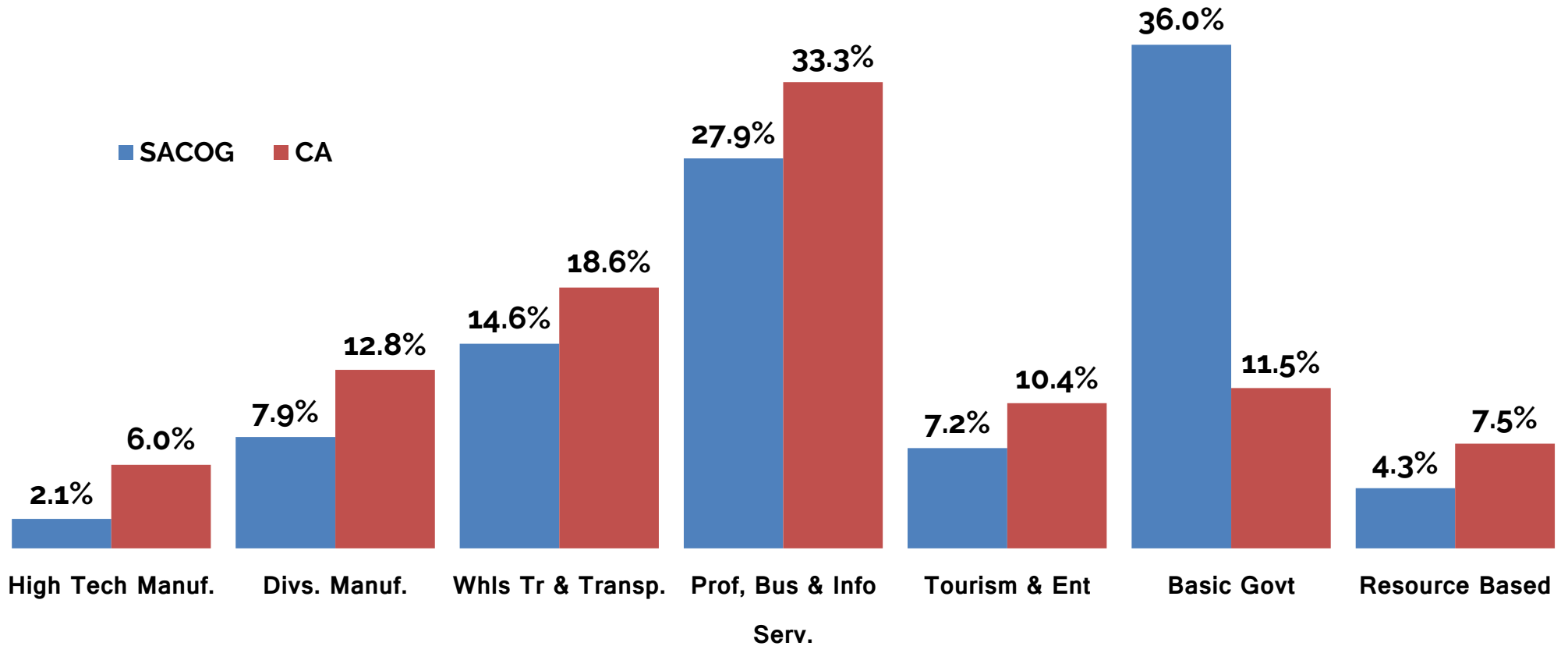
GRPA Committee | October 2017



Average Annual Job Growth Rate



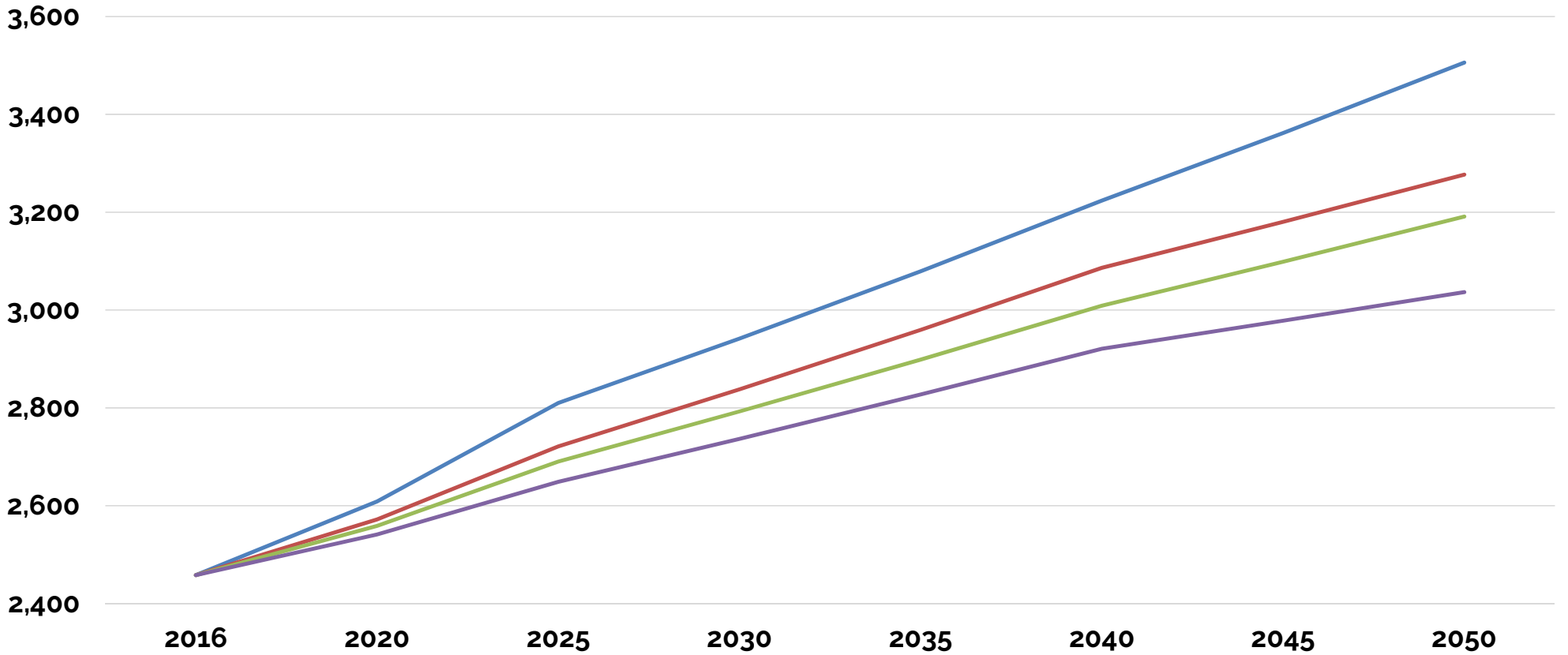
Economic Base Cluster Shares 2016



Source: CCSCE

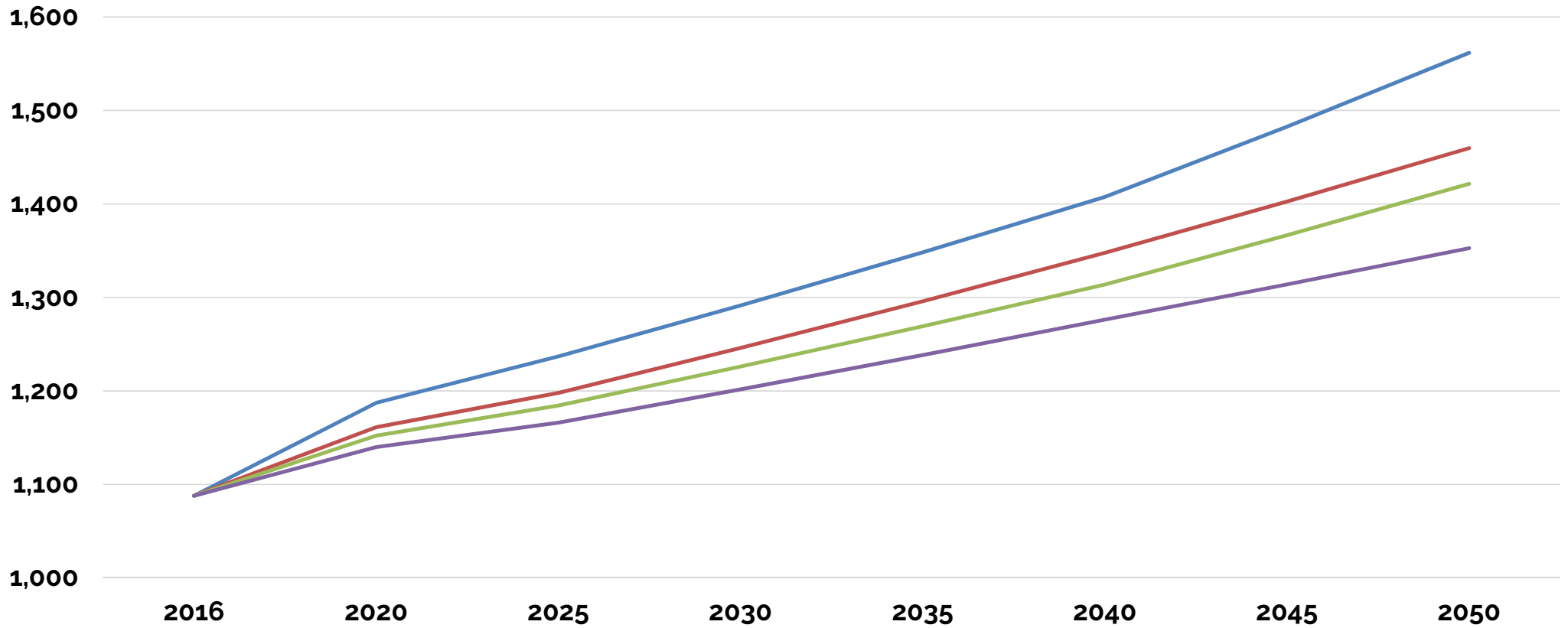
Population Projection Series (in 1,000s)

— High Series — Recommended — Baseline Series — Low Series



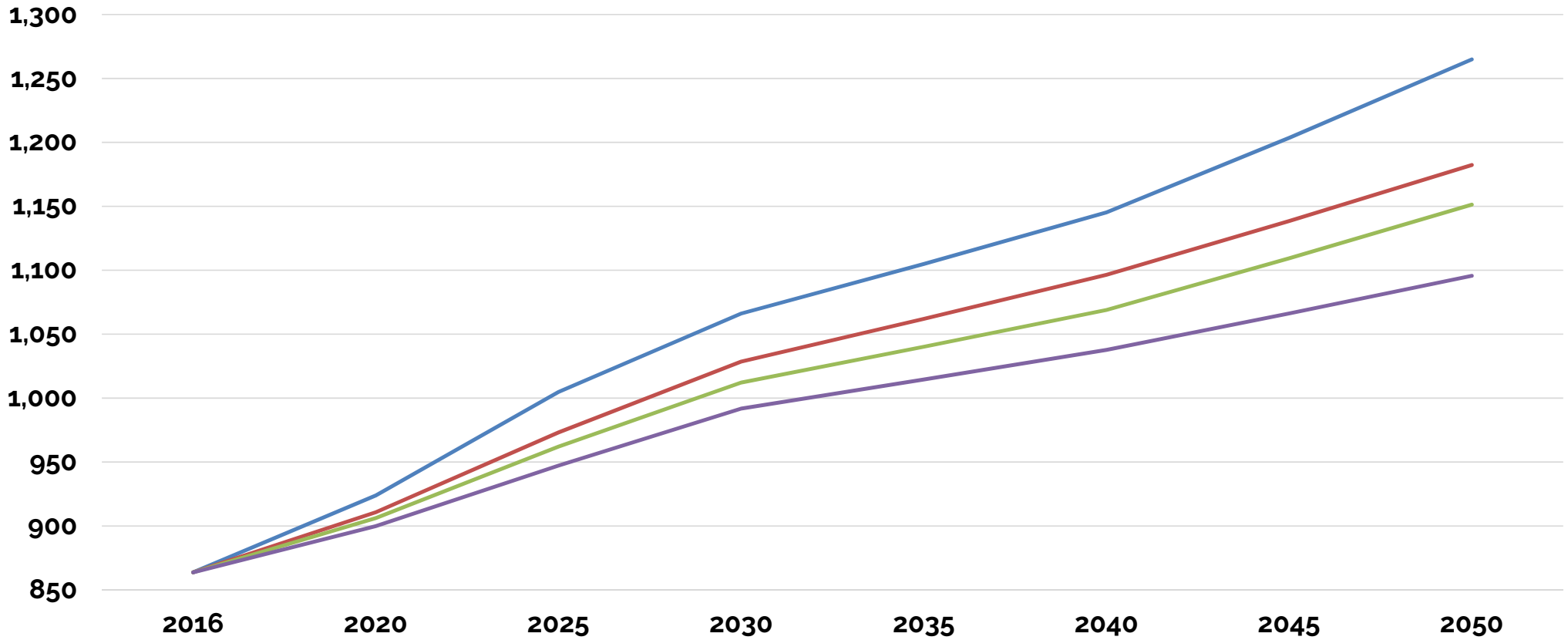
Jobs Projection Series (in 1,000s)

— High Series — Recommended — Baseline series — Low Series

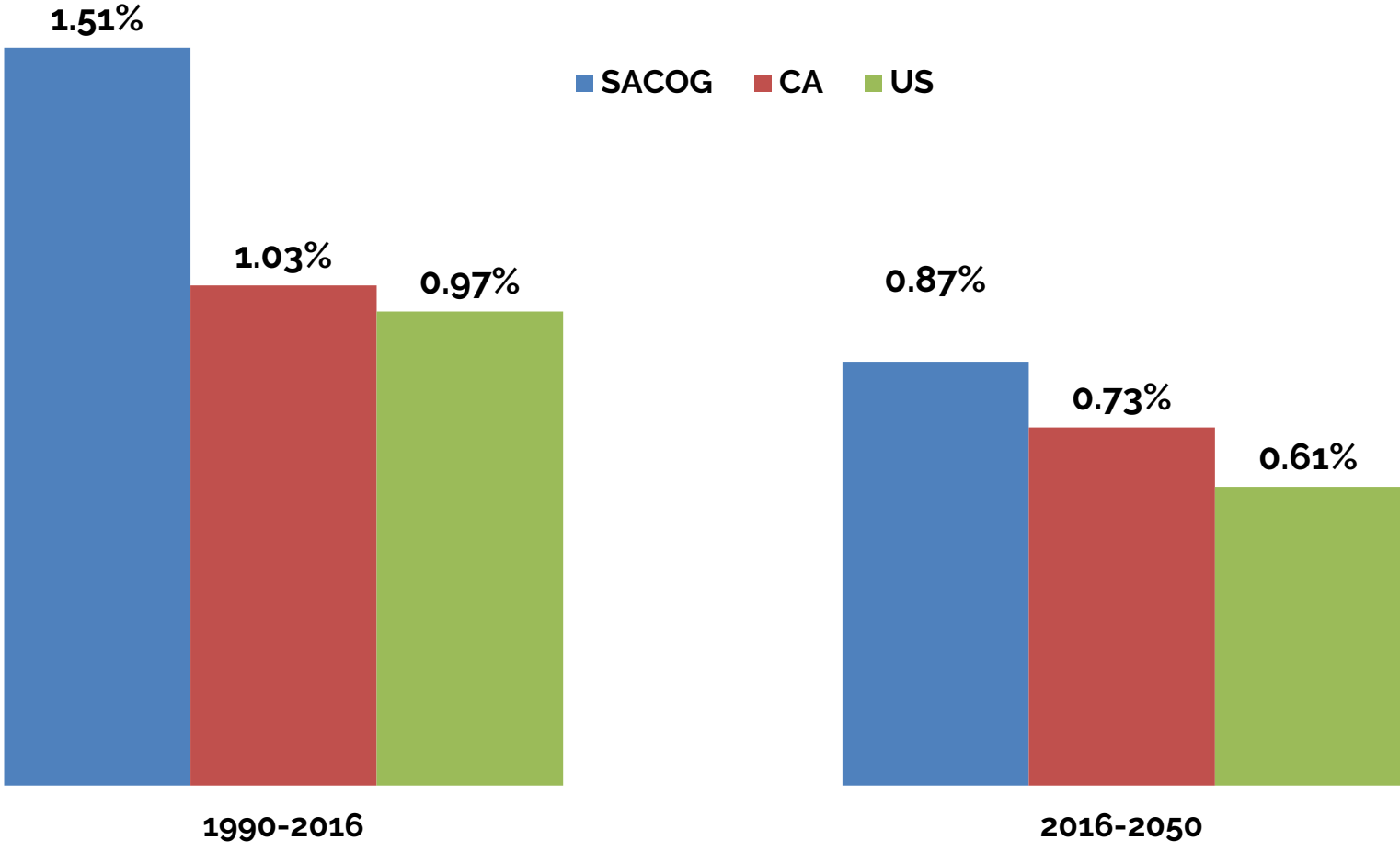


Households Projection Series (in 1,000s)

— High Series — Recommended — Baseline Series — Low Series

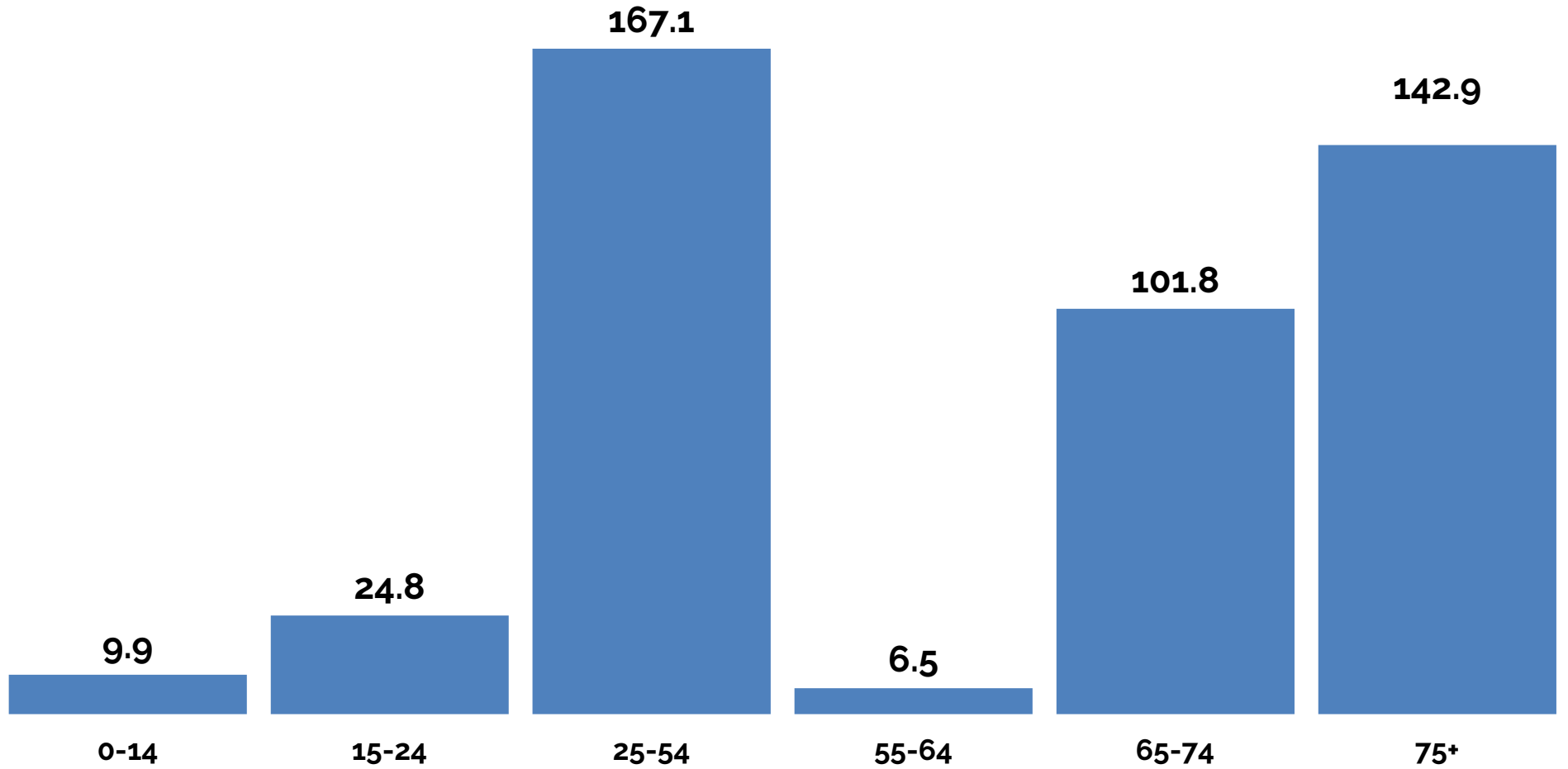


Average Annual Job Growth



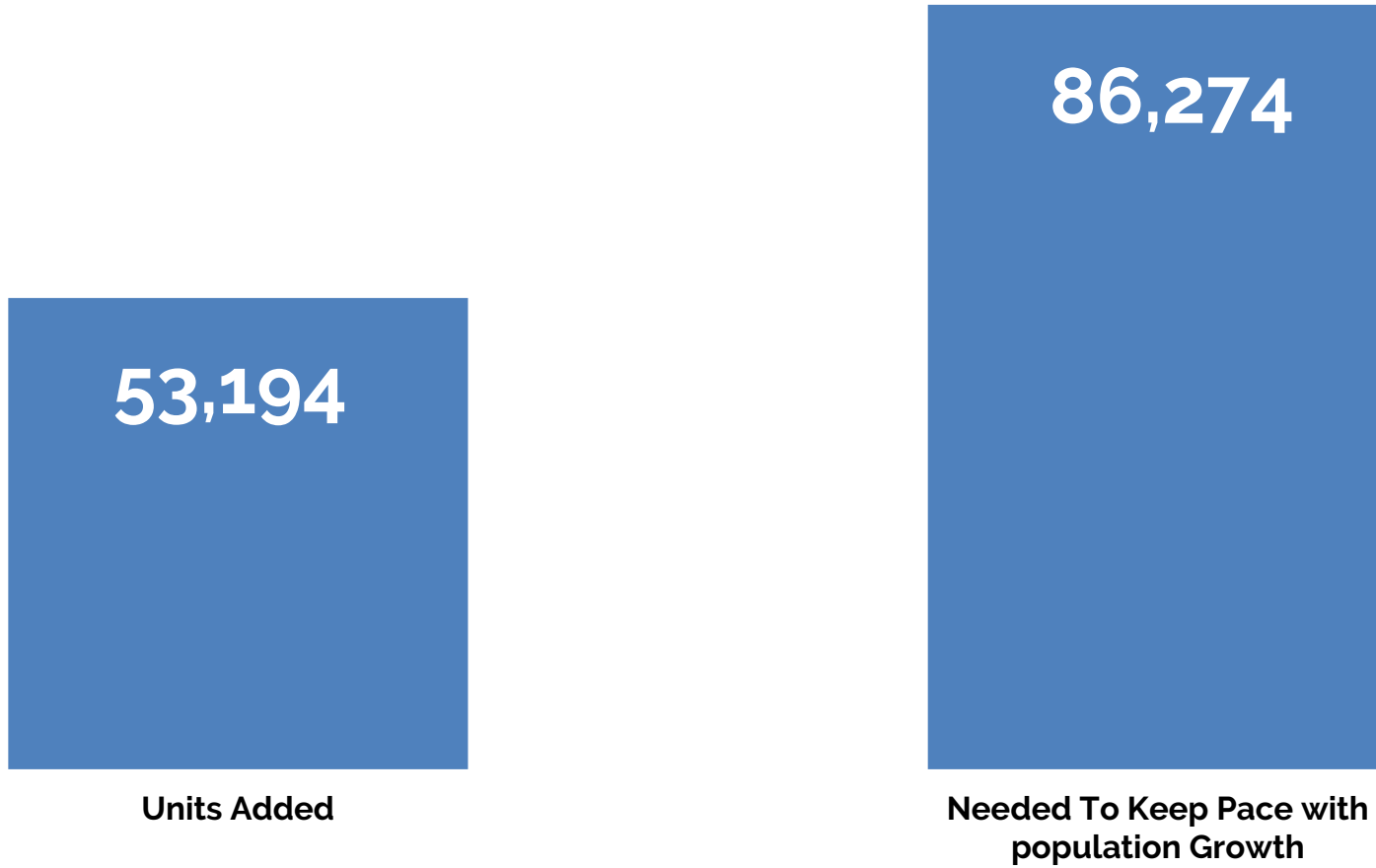
Source: CCSCE

Regional Population Growth 2015-30



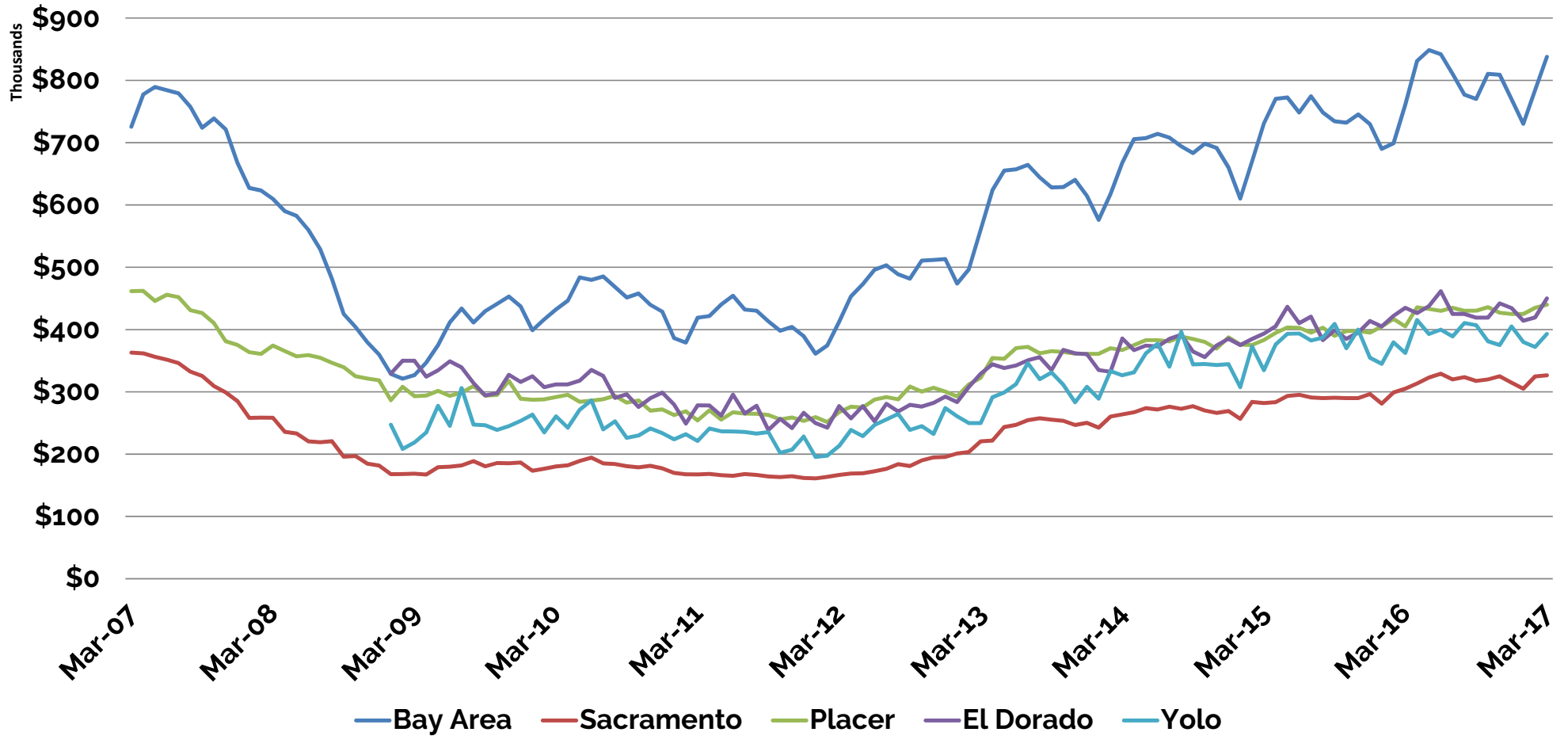
75+
Source: CCSCE

Regional Housing Shortage 2007-16



Source: CCSCE

Median Resale Home Prices



Draft Growth Projections (absolute)



	2016	2040	2050
Population	2.45 M	3.08 M	3.27 M
Industry	1.08 M	1.35 M	1.46 M
Housing	.86 M	1.09 M	1.18 M

Source: CCSCE, for 6-county region

Draft Growth Projections (additional from 2016)



	2040	2050
Population	628,000	819,000
Construction	260,000	372,000
Residential	233,000	319,000

Source: CCSCE, for 6-county region