

# Sacramento Regional Area Planning Commission (Predecessor to SACOG)

## Regional Governance Type

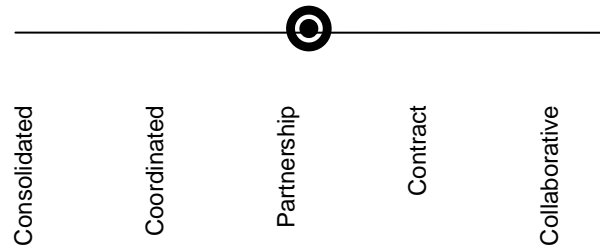
*Structure:* Council of Governments

*Governance:* Some permanent seats; rotating seats for most cities

*Coordination:* grant writing, grant distribution, planning

*Programs:*

- Law Enforcement Assistance Administration (eight-county criminal justice planning)
- U.S. EPA Non-Attainment Planning Lead Agency
- U.S. EPA Water quality planning (Section 208): Water Quality Plan
- OMB (A-95 Areawide Clearinghouse)
  - SRAPC had an opportunity to review and comment on most federal grant applications in the region (this function was not funded by OMB)
- U.S. HUD Joint Funding Program
- U.S. HUD 204 review agency
- U.S. HUD 701 Comprehensive Planning and Management grantee
- Farmers Home Administration grant recipient
- Federal Aviation Administration grant recipient



Contract work with member jurisdictions:

- Emission reduction program
- Air quality implementation monitoring
- Technical assistance on energy conservation
- Technical planning and management assistance
- Housing rehabilitation program
- Group purchasing of office supplies, postage

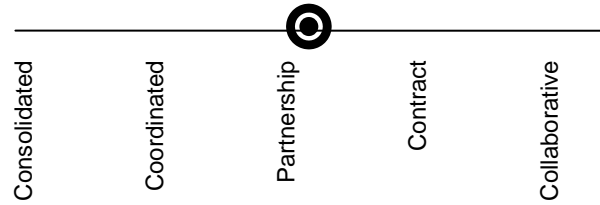
# Association of Bay Area Governments

## Regional Governance Type

**Structure:** Council of Governments

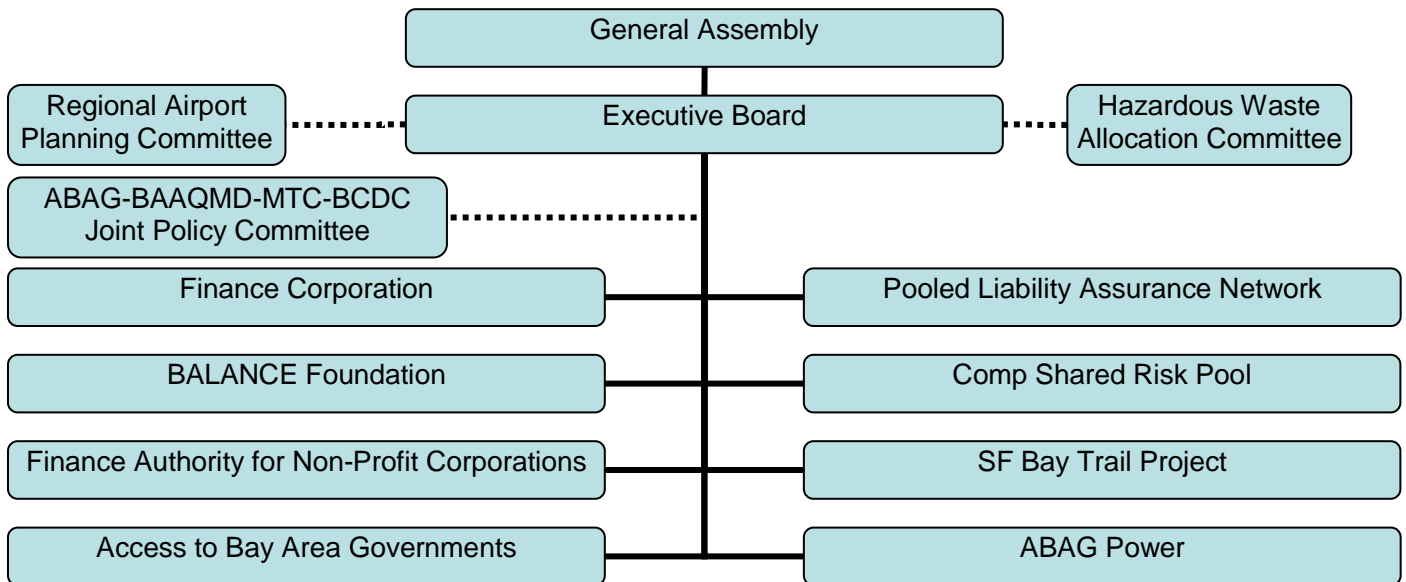
**Governance:** 38-member Executive Board represents nine counties and 101 cities (all cities participate in an annual meeting)

**Coordination:** Joint planning work done with Metropolitan Transportation Commission, Bay Area Air Quality Management District, and Bay Conservation and Development Commission.



**Programs:**

- Research & analysis
- Land use planning
- Public outreach
- Federal grant application clearinghouse
- Green business program
- Earthquake preparedness/hazard mitigation program
- Resource conservation planning and management
- Online training
- Web hosting
- Pooled purchasing
- Risk management



# Metropolitan Council (Minneapolis-St. Paul)

## Regional Governance Type

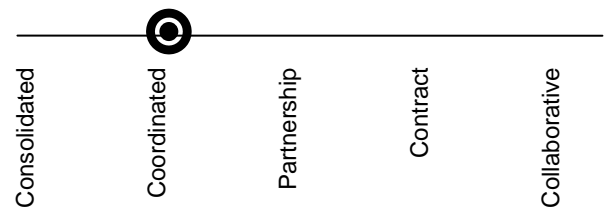
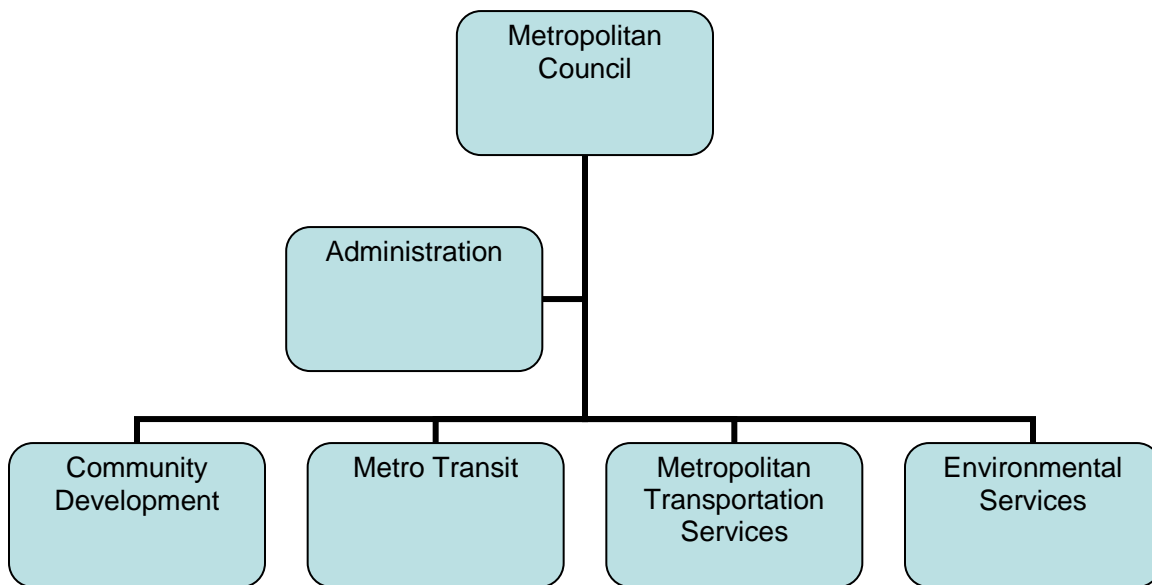
**Structure:** MPO and special regional government (established by state statute in 1967).

**Governance:** 17 members appointed by the governor (not elected officials), representing geographic districts (with one at-large chair). In total, the region consists of seven counties, 188 cities and townships, and 22 special purpose districts.

**Coordination:** Notably, a separate association, Metro Cities, has a board of elected officials and city managers representing 79 of the 188 cities and townships in the region. Metro Cities lobbies Metro Council as well as the legislature on the needs of local governments. They are supportive of a regional government appointed by the governor, but are interested in greater input and oversight.

### Programs:

- Transit operator
- Wastewater operator
- Economic development coordination
- Land use planning
- Regional park/trail planning
- Affordable housing



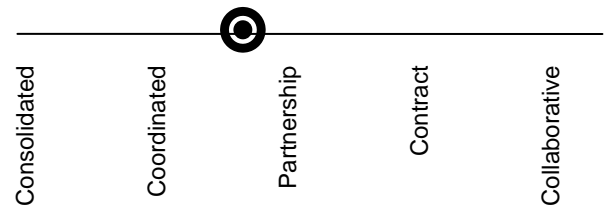
# Mid-America Regional Council

**Structure:** MPO and nonprofit

**Governance:** 33 member board (nine counties and 120 cities in total)

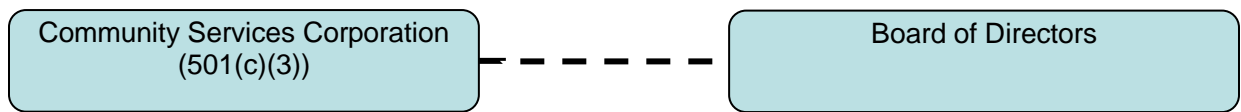
**Coordination:** Regional Workforce Intelligence Network of Greater Kansas City (RWIN) — a coalition of economic development professionals, chambers of commerce, workforce centers, community colleges and universities — was convened to encourage greater collaboration among the region’s workforce data and information professionals. RWIN launched a monthly dashboard that measures changes in the labor force, unemployment, help wanted ads, educational attainment and training. The dashboard also includes an employer confidence survey that helps identify real-time changes in hiring and other economic shifts in the region.

## Regional Governance Type



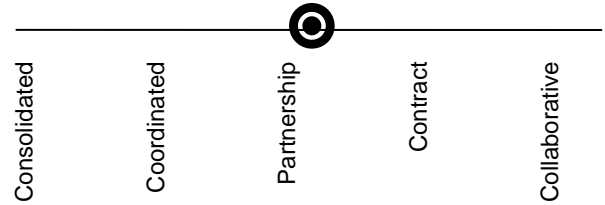
### Programs:

- Aging services
- Community development
- Public safety and emergency services
- Environmental programs
- Government innovations forum
- Government training institute
- Early childhood care and education planning
- Demographic research and analysis
- Transportation planning



# Chicago Metropolitan Agency for Planning & MPO Policy Committee

## Regional Governance Type



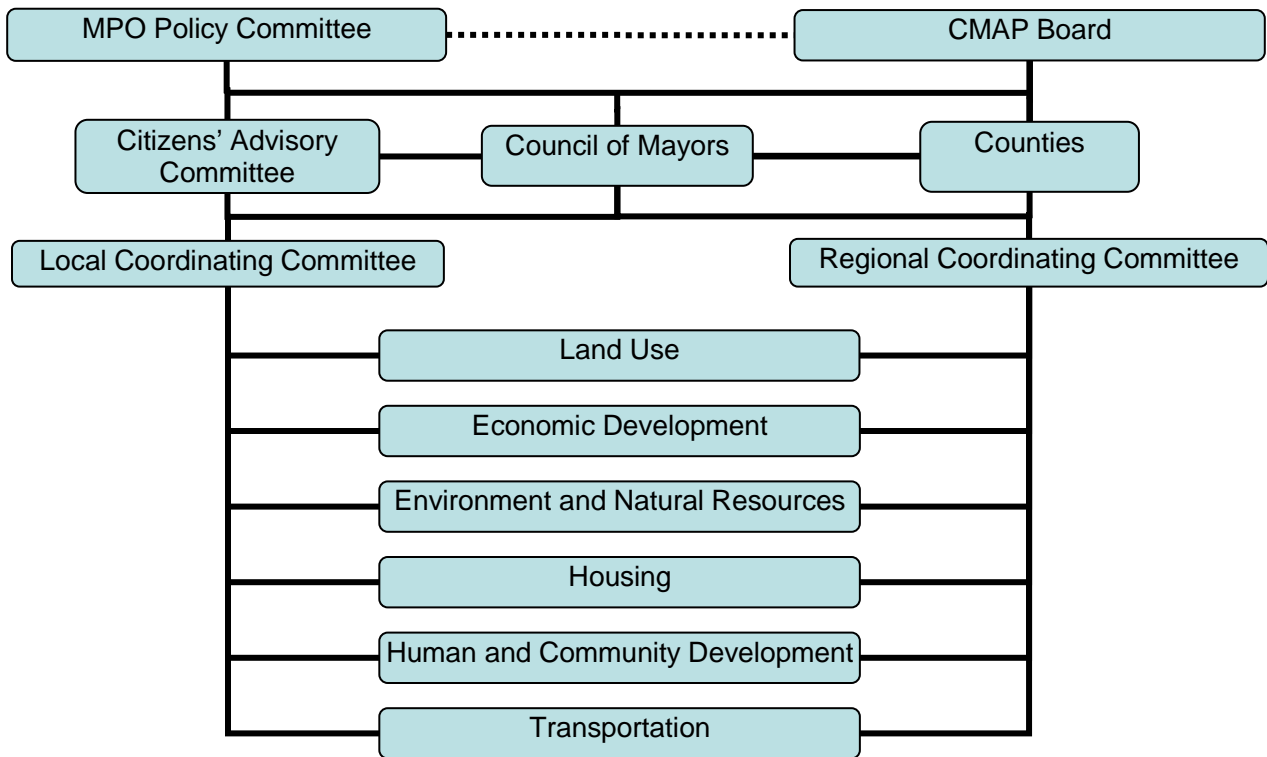
**Structure:** CMAP created by state statute; MPO Policy Committee

CMAP develops a funding and implementation strategy for an integrated land use and transportation planning process. MPO prepares the MTP and MTIP.

**Governance:** Two separate boards, with coordination by MOU. CMAP’s board is comprised of members appointed from the City of Chicago and two counties (15 members in total). Some, but not all, members are elected officials. A member of the MPO Policy Committee has a non-voting seat. The MPO Policy Committee is comprised of elected officials and staff representing local governments, federal agencies, and transit operators.

**Programs:**

- Local planning technical support
- Policy analysis & development (regional mobility, human capital, livable communities)
- Communication
- Regional information & data development
- Data sharing & warehousing
- Transportation programming
- Congestion management
- Water resource planning
- Energy impact program
- IT management
- Finance and administration



# San Diego Association of Governments

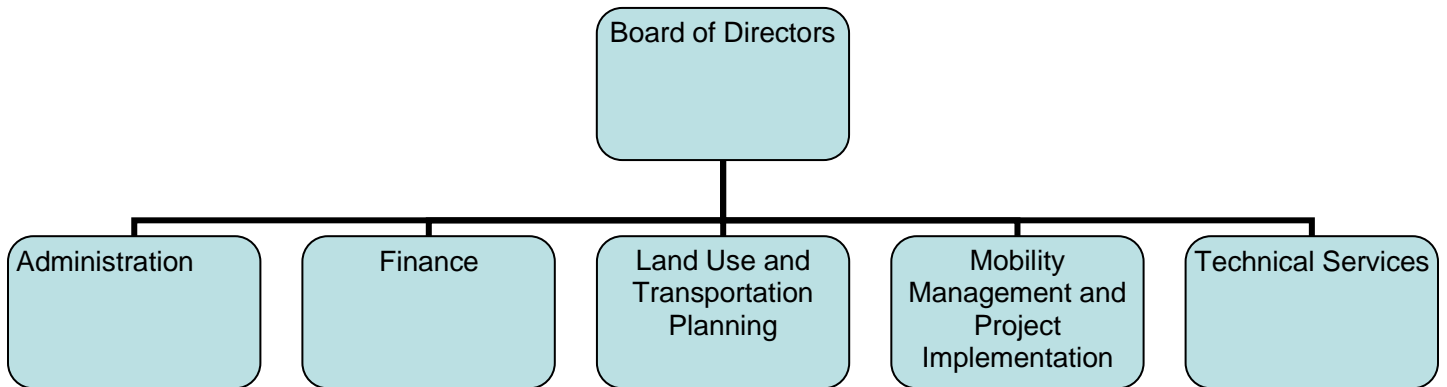
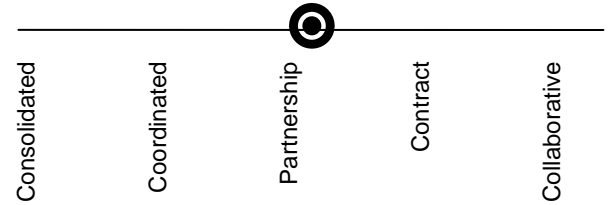
**Structure:** Council of Governments and MPO

**Governance:** 19-member board representing all jurisdictions, plus advisory members representing Caltrans, transit operators, U.S. Department of Defense, Port of San Diego, County Water Authority, Tribal Chairmen’s Association, and Consulate General of Mexico.

**Programs:**

- Toll road maintenance and operations
- Airport planning
- Land use planning
- Demographic forecasting
- Transportation planning
- Transportation sales tax authority
- Economic research
- Energy planning
- Habitat planning
- Waste management planning
- Border planning
- Public safety planning

## Regional Governance Type



# Metro Oregon (Portland)

**Structure:** Charter regional government (created by statute) and MPO

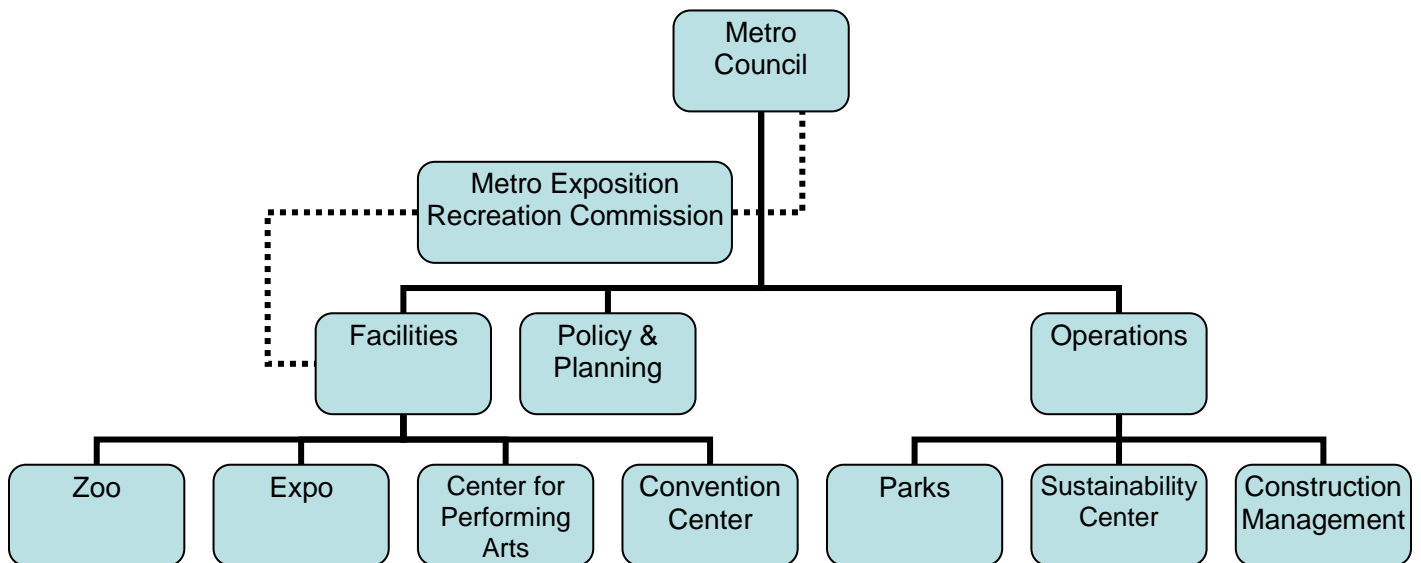
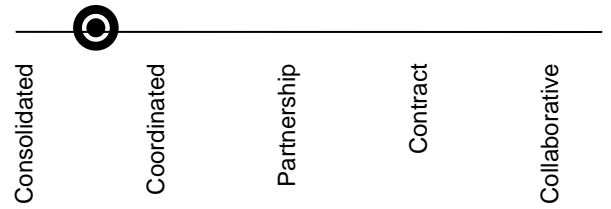
**Governance:** Seven-member council directly elected, with six districts and one at-large president. Represents an area of three counties and 25 cities

**Coordination:**

**Programs:**

- Regional planning and policy
- Urban development and revitalization
- Transportation and land use projects
- Natural areas, parks and trails
- Garbage and recycling
- Research and analysis

## Regional Governance Type



# Mid-Ohio Regional Planning Commission (Columbus)

**Structure:** MPO and council of governments

**Governance:** 44 local governments represented by elected officials and staff

**Coordination:** Public-private partnership for energy and environmental leadership

**Programs:**

- Energy & Environment
- Housing
  - Counseling
  - Rehabilitation
  - Housing Advisory Board
  - Neighborhood Stabilization Program
- Regional development
- Transportation
- Government affairs
  - Regional Policy Roundtable (public, private, non-profit sectors)

## Regional Governance Type

