

SACRAMENTO REGION

Blueprint

TRANSPORTATION LAND USE STUDY

Sutter / Yuba City Neighborhood Workshop



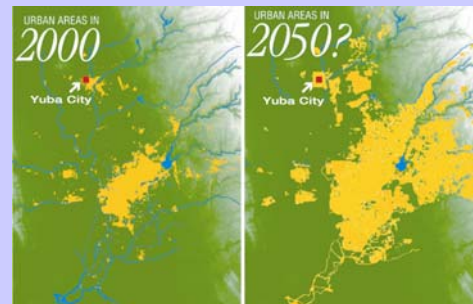
Blueprint Project

- Regional land use-transportation options for next 50 years
- Neighborhood workshops provide “reality check”— we want your opinions!
- Results will influence county-wide options (public workshops this summer)
- Results will also influence regional options
 - Regional conference: November 7, 2003
 - Region workshops (winter, '03 – '04)
 - Electronic town hall

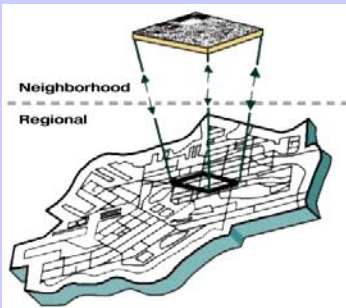
What You will do Tonight

- Create one or two planning options
 - test drive “smart growth” concepts, tell us what you like and don’t like
- Use maps, menus, stickers and computer software

Regional Growth



Need to plan both the regional and neighborhood levels



Smart Growth Principles

- Transportation Choice – viable options
- Housing Choice – aging, diverse households
- Compact Development – use land efficiently
- Use of Existing Assets – build on what we have
- Mixed Use Development – reduces auto travel
- Natural Resource Conservation – economic/environmental reasons
- Quality Design – enhance overall livability