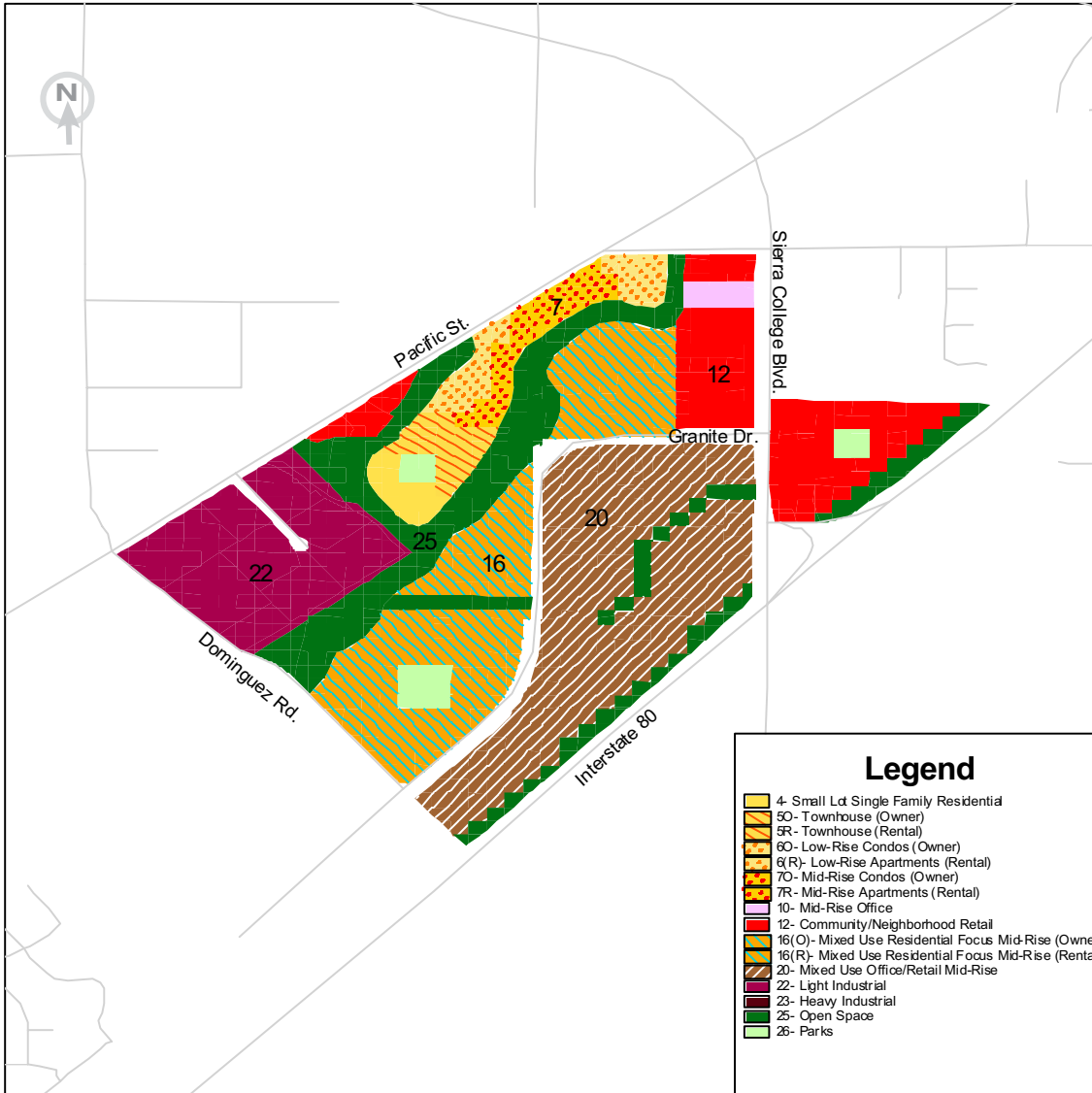


TABLE 1

Granite-Dominguez— Smart Growth Scenario



**Key Land Uses Featured**



7 Mid-Rise Condos



12 Community/Neighborhood Retail



20 Mixed-Use Retail/Office Mid-Rise



25 Open Space



22 Light Industrial

**Key Elements of Planning Scenario**

This group designed a campus-like office park on the existing area zoned for retail along I-80. In the north section, housing borders bike/pedestrian greenbelts. Specific features of the plan include:

- Footbridge crossings at floodplain and roads
- Affordable mixed-use mid-rise housing
- 30% open space allotted for housing developments
- Movie theater retail

Resulted in the following changes from base case:

- Capacity for 900 more employees
- Capacity for 1,500 more dwelling units
- Improved land use mix to 5 employees per dwelling unit from zero dwelling units

**PLACE<sup>3</sup>S Indicators**

Total Employees .....	7,819
Total Residents .....	2,774
Employees per Dwelling Unit .....	5.3
Pedestrian Friendliness (1 = worst, 5 = best) .....	3.2
Change in Vehicle Miles Traveled per Household from Base Case* .....	-27%

\*See Granite-Dominguez Detailed Indicators for more information

3000 S Street,  
Suite 300  
Sacramento, CA  
95816

tel 916.457.2264  
fax 916.457.3299  
tdd 916.737.1718  
www.sacog.org

# DETAILED INDICATORS

## Granite-Dominguez

	<b>Base Case</b>	<b>Table 1 Smart Growth</b>	<b>Table 2 Smart Growth</b>
Total Employees .....	6,916	7,819	7,699
Total Dwelling Units .....	0	1,486	162
Total Residents .....	0	2,774	308
Employees per Dwelling Unit .....	undefined	5.3	47.4
Retail Jobs .....	5,550	3,770	5,475
Office Jobs .....	474	3,631	1,974
Industrial Jobs .....	893	418	251
Public Jobs .....	0	0	0
Pedestrian Friendliness (1 = worst, 5 = best) .....	1.8	3.2	2.2

### Transportation PLACE<sup>3</sup>S Indicators Changes from Base Case\*

	<b>Base Case</b>	<b>Table 1 Smart Growth</b>	<b>Table 2 Smart Growth</b>
Change in VT per Household .....	0%	-22%	-23%
Change in VMT per Household .....	0%	-27%	-29%
Change in VT per Retail Job .....	0%	-11%	-18%
Change in VMT per Retail Job .....	0%	-14%	-21%
Change in VT per Non-Retail Job .....	0%	-4%	-1%
Change in VMT per Non-Retail Job .....	0%	-42%	-31%

VT = Vehicle Trips

VMT = Vehicle Miles Traveled, and it is an indicator of energy use and air emissions

\* The "Base Case" future assumes that existing land uses remain through a 50-year time frame and that vacant parcels will be developed at their current general plan land use designation.

3000 S Street,  
 Suite 300  
 Sacramento, CA  
 95816

tel 916.457.2264  
 fax 916.457.3299  
 tdd 916.737.1718  
[www.sacog.org](http://www.sacog.org)