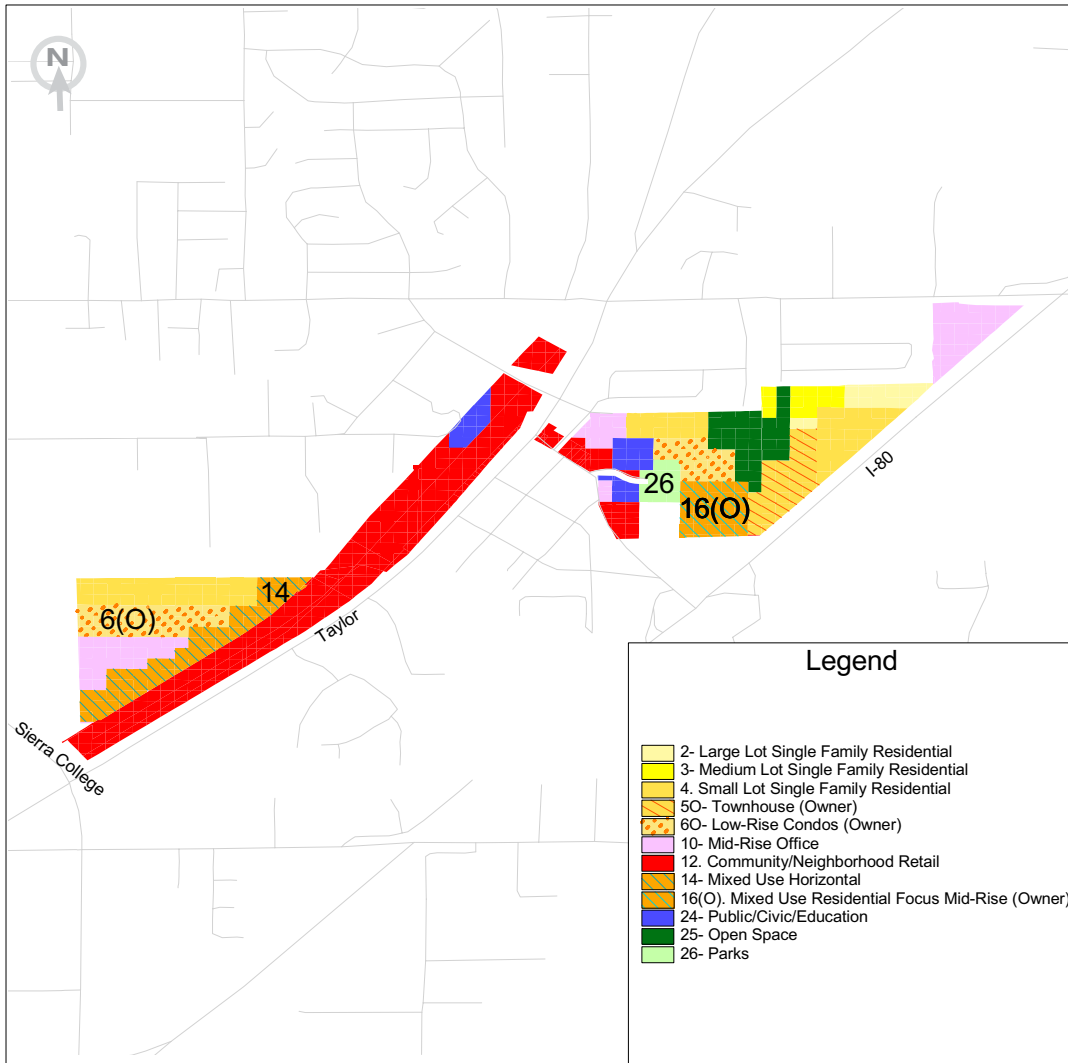


TABLE 2

Loomis— Smart Growth Scenario



Key Land Uses Featured



26 Parks



16 Mixed-Use Residential Focus Mid-Rise



14 Mixed-Use Retail/ Residential Horizontal



6 Low-Rise Condos

Key Elements of Planning Scenario

These participants wanted to preserve the “small town feel” of Loomis and create a “cohesive neighborhood.” To do this, they designed a town center project that features a skateboard park, hotel, library, and retail. This became their Community Design Candidate.* Specific features of the plan include:

- Improvement to all sidewalks
- Senior housing in southwest corner

Resulted in the following changes from the base case:

- Capacity for 1,900 fewer employees
- Capacity for 800 more dwelling units
- Improved land use mix from 63 to 4 employees per dwelling unit

PLACE³S Indicators

Total Employees	3,871
Total Residents	1,976
Employees per Dwelling Unit	4.5
Pedestrian Friendliness (1 = worst, 5 = best)	2.6
Change in Vehicle Miles Traveled per Household from Base Case*	-25%

*See Loomis Detailed Indicators for more information

3000 S Street,
Suite 300
Sacramento, CA
95816

tel 916.457.2264
fax 916.457.3299
tdd 916.737.1718
www.sacog.org

*A Community Design Candidate is a project suggested by participants for competition in the SACOG Community Design Grant Program. This program will provide incentives for creating communities in the Sacramento region that foster walking, biking, and transit trips instead of driving. For more information, visit <http://www.sacog.org/regionalfunding/communitydesign.pdf>

DETAILED INDICATORS

Loomis

	Base Case	Table 1 Smart Growth	Table 2 Smart Growth	Table 3 Smart Growth	Table 4 Smart Growth	Table 5 Smart Growth
Total Employees	5,771	3,766	3,871	3,201	2,766	2,848
Total Dwelling Units	91	947	870	910	1,519	711
Total Residents	251	1,864	1,976	2,016"	2,765"	1,577
Employees per Dwelling Unit	63.3	4.0	4.5	3.5	1.8	4.0
Retail Jobs	3,680	2,520	2,877	1,733	2,263	2,005
Office Jobs	2,060	834	887	1,366	458	742
Industrial Jobs	0	0	0	0	0	0
Public Jobs	30	412	107	103	45	101
Pedestrian Friendliness (1 = worst, 5 = best)	2.3	2.6	2.6	2.7	2.7	2.5

Transportation PLACE³S Indicators Changes from Base Case*

	Base Case	Table 1 Smart Growth	Table 2 Smart Growth	Table 3 Smart Growth	Table 4 Smart Growth	Table 5 Smart Growth
Change in VT per Household	0%	-21%	-22%	-23%	-22%	-22%
Change in VMT per Household	0%	-25%	-25%	-25%	-22%	-25%
Change in VT per Retail Job	0%	-20%	-14%	-17%	3%	-11%
Change in VMT per Retail Job	0%	-19%	-13%	-17%	4%	-11%
Change in VT per Non-Retail Job	0%	-15%	-7%	-9%	-7%	-5%
Change in VMT per Non-Retail Job	0%	-26%	-26%	-22%	-37%	-25%

VT = Vehicle Trips

VMT = Vehicle Miles Traveled, and it is an indicator of energy use and air emissions

* The "Base Case" future assumes that existing land uses remain through a 50-year time frame and that vacant parcels will be developed at their current general plan land use designation.

3000 S Street,
 Suite 300
 Sacramento, CA
 95816

tel 916.457.2264
 fax 916.457.3299
 tdd 916.737.1718
 www.sacog.org

DETAILED INDICATORS

Loomis

	Base Case	Table 1 Smart Growth	Table 2 Smart Growth	Table 3 Smart Growth	Table 4 Smart Growth	Table 5 Smart Growth
Total Employees	5,771	3,766	3,871	3,201	2,766	2,848
Total Dwelling Units	91	947	870	910	1,519	711
Total Residents	251	1,864	1,976	2,016"	2,765"	1,577
Employees per Dwelling Unit	63.3	4.0	4.5	3.5	1.8	4.0
Retail Jobs	3,680	2,520	2,877	1,733	2,263	2,005
Office Jobs	2,060	834	887	1,366	458	742
Industrial Jobs	0	0	0	0	0	0
Public Jobs	30	412	107	103	45	101
Pedestrian Friendliness (1 = worst, 5 = best)	2.3	2.6	2.6	2.7	2.7	2.5

Transportation PLACE³S Indicators Changes from Base Case*

	Base Case	Table 1 Smart Growth	Table 2 Smart Growth	Table 3 Smart Growth	Table 4 Smart Growth	Table 5 Smart Growth
Change in VT per Household	0%	-21%	-22%	-23%	-22%	-22%
Change in VMT per Household	0%	-25%	-25%	-25%	-22%	-25%
Change in VT per Retail Job	0%	-20%	-14%	-17%	3%	-11%
Change in VMT per Retail Job	0%	-19%	-13%	-17%	4%	-11%
Change in VT per Non-Retail Job	0%	-15%	-7%	-9%	-7%	-5%
Change in VMT per Non-Retail Job	0%	-26%	-26%	-22%	-37%	-25%

VT = Vehicle Trips

VMT = Vehicle Miles Traveled, and it is an indicator of energy use and air emissions

* The "Base Case" future assumes that existing land uses remain through a 50-year time frame and that vacant parcels will be developed at their current general plan land use designation.

3000 S Street,
 Suite 300
 Sacramento, CA
 95816

tel 916.457.2264
 fax 916.457.3299
 tdd 916.737.1718
 www.sacog.org